



HUNTERS®
HERE TO GET *you* THERE

25 Berwick Road, Easton, Bristol, BS5 6NG

25 Berwick Road, Easton, Bristol, BS5 6NG

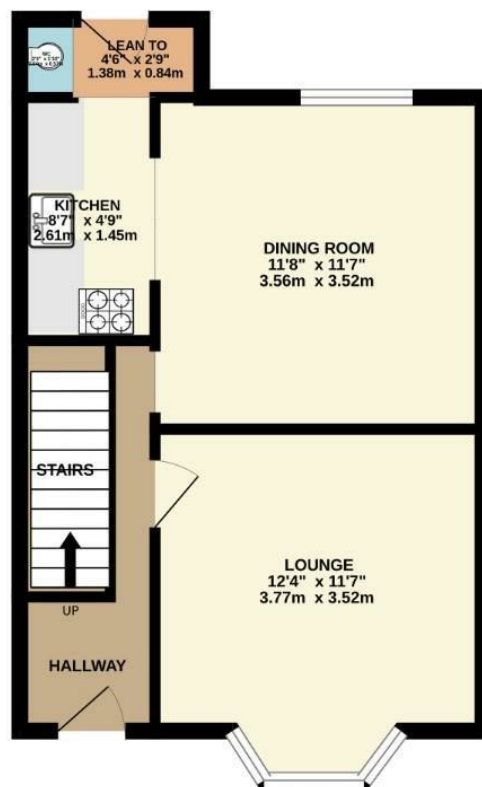
Offers In Excess Of £355,000

****LOCATION IS KEY HERE!**** One way road going off popular St Marks Road with Garden of Easton & New Fish & Chip shop at the end complete with immediate train station and cycle track access! Internally a wonderfully cosy home with bay fronted lounge and kitchen diner to the rear opening onto a South Facing private garden not overlooked with the added bonus of lean to with storage space and WC. Upstairs are two double bedrooms and a bathroom. This home has been wonderfully maintained and finished throughout. Please get in touch to visit.

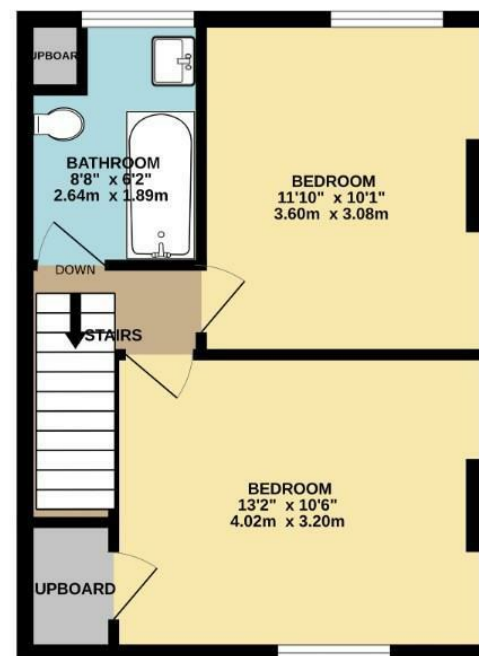
- Off St Marks Road
- Garden of Easton at the End
- One Way Road
- Cycle Track & Train Station Nearby
- Sweet Mart on the Doorstep
- Cosy Bay Fronted Lounge
- Kitchen Diner
- Lovely Private South Facing Garden
- Very Good Condition Throughout
- Upstairs Bathroom & Downstairs WC

Hunters Easton 72 St Marks Road, Easton, BS5 6JH | 0117 9522 939
easton@hunters.com | www.hunters.com

GROUND FLOOR
390 sq.ft. (36.2 sq.m.) approx.

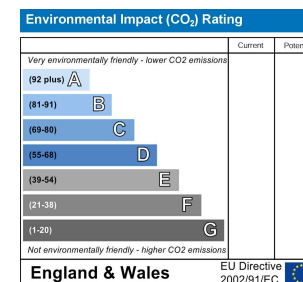
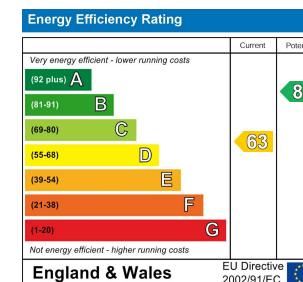


1ST FLOOR
361 sq.ft. (33.5 sq.m.) approx.



TOTAL FLOOR AREA: 750 sq.ft. (69.7 sq.m.) approx.

Whilst every attempt has been made to ensure the accuracy of the floorplan contained here, measurements of doors, windows, rooms and any other items are approximate and no responsibility is taken for any error, omission or mis-statement. This plan is for illustrative purposes only and should be used as such by any prospective purchaser. The services, systems and appliances shown have not been tested and no guarantee as to their operability or efficiency can be given.
Made with Metropix ©2024



FRONT DOOR

ENTRANCE HALL

Stairs to first floor, wall mounted meters, radiator, under stairs storage space, doors to

LOUNGE

11'7" x 11'6"
Double glazed bay window to front, radiator, fireplace

DINING ROOM

11'8" x 11'7"
Double glazed French doors to rear garden, radiator, ample space for dining table and chairs, opening into

KITCHEN

8'7" x 4'9"
Wall and base units with work surface over, sink and drainer, tiled splash backs, space for opening into

LEAN TO

Handy additional appliance or storage space with door and windows to rear garden, door into

WC

WC and wash hand basin

STAIRS

Painted wood staircase leading to first floor landing with loft access and doors to

BATHROOM

BEDROOM ONE

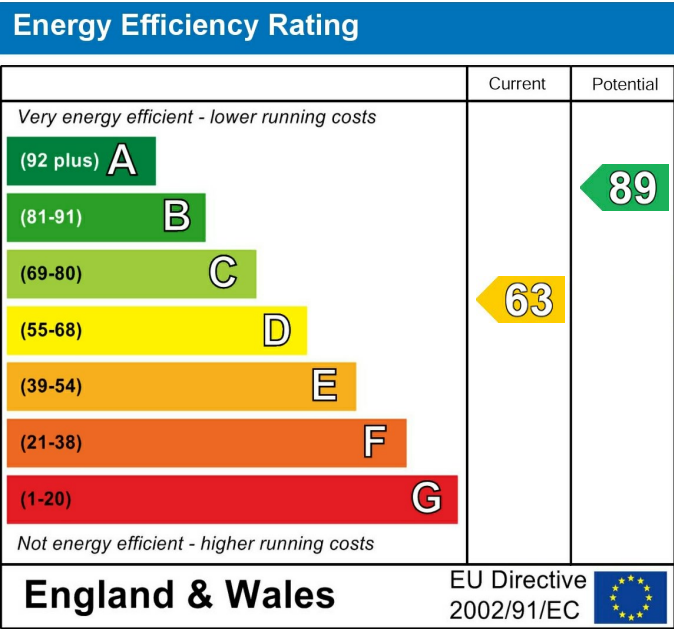
13'2" x 10'6"
Double glazed window to front, radiator, built in storage cupboard over stairs

BEDROOM TWO

11'10" x 10'1"
Double glazed window to rear, radiator

GARDEN

South facing garden mainly laid with patio, flower bed surround



These particulars are intended to give a fair and reliable description of the property but no responsibility for any inaccuracy or error can be accepted and do not constitute an offer or contract. We have not tested any services or appliances (including central heating if fitted) referred to in these particulars and the purchasers are advised to satisfy themselves as to the working order and condition. If a property is unoccupied at any time there may be reconnection charges for any switched off/disconnected or drained services or appliances - All measurements are approximate. If you are thinking of selling your home or just curious to discover the value of your property, Hunters would be pleased to provide free, no obligation sales and marketing advice. Even if your home is outside the area covered by our local offices we can arrange a Market Appraisal through our national network of Hunters estate agents.









